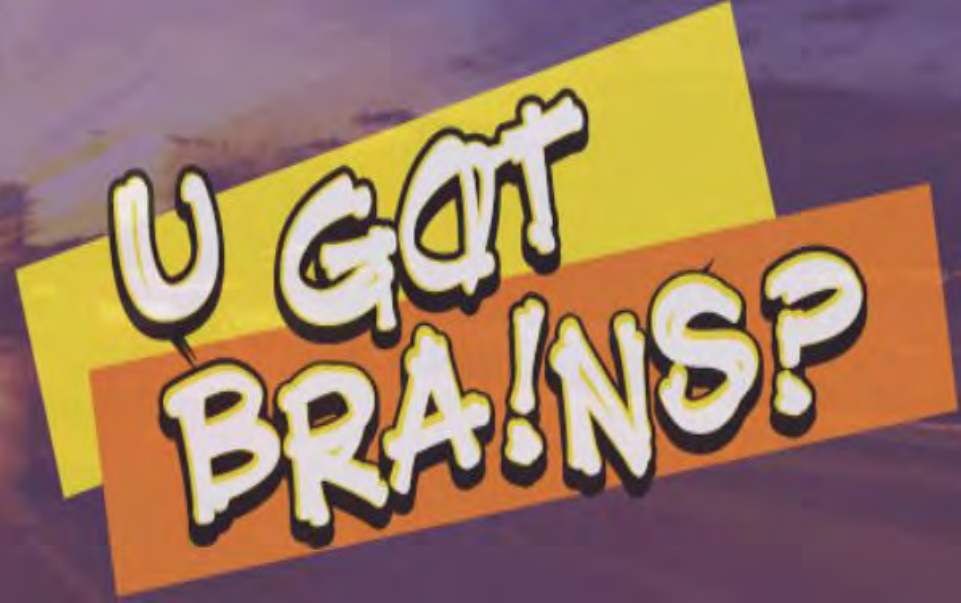


Neptune Twp. HS Champion Schools Final Report

2023-2024



Neptune HS Medical Science
Jumpstart worked on the
Champions Schools; U Got
Brains Challenge to present



Drive Focus Neptune Drives Safe





Our Team



01

Our Vision and Ideas



Neptune



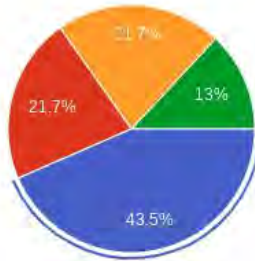
Vision and Ideas

In the start of this project, our first task was to develop the topic we are presenting for our program. As we reached the topic, we started brainstorming ideas by having weekly meetings to discuss the plan and procedures to take initiate. Our team also meet virtually with the (BIA) Brain Injury Alliance of New Jersey in search of support to build and create this project.



What teen driver safety behavior should we address?

23 responses

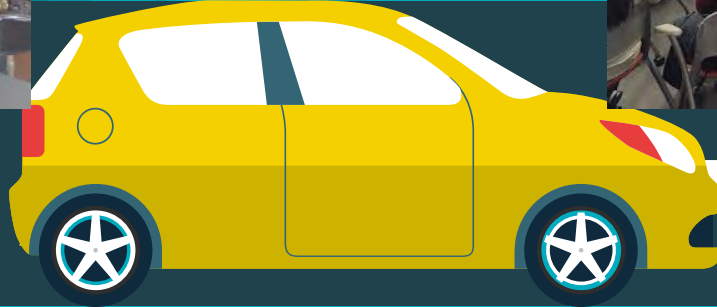


- Drive Focused (focus on avoiding driver distractions such as texting or using the phone, eating, too many passengers,...)
- Ride Focused (passengers help support the driver by not distracting, becoming the designated texter, etc.)
- GDL Compliance (focus on GDL responsibilities: use of seatbelts (all riders, all the time), restrict passenger...)
- Pedestrian Focused

Focus for our Campaign Survey Results

Meetings

Students would stay after school to discuss and collaborate together by brainstorming ideas we could do differently this year. Students would work hard in the planning phase by challenging ideas and putting them in action.



Safety Ambassadors Program

Neptune Medical Science Jumpstart decided to try something new this year by joining for the first time a program called RWJ Safety Ambassadors Program; Students Teaching Students About Safety, that consists of training High School students to educate 1st and 2nd graders about the safeness in their communities through safe practices through fall prevention, safety in and around cars, pedestrian safety, and wheeled sports. We attended a Safety Summit to learn more of this program and how professional we should engage with the students to be aware of these injury risk area. Students applied social skills, teamwork, creativity, and great communication to deliver their oral presentation or message to elementary students. We also took surveys to acknowledge what we would be learning.

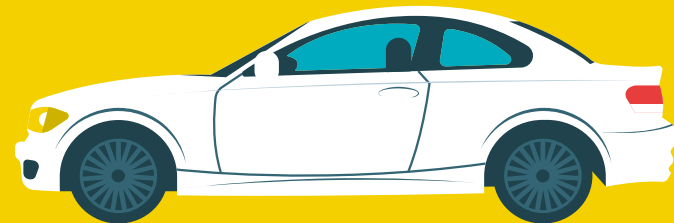


NHS Safety Ambassadors 23/24





Trips to Summerfield Elementary School-Safety in and Around Cars



Trips to Summerfield Elementary- Pedestrian Safety





Trips to
Summerfield
Elementary-
Wheeled Sports
Safety

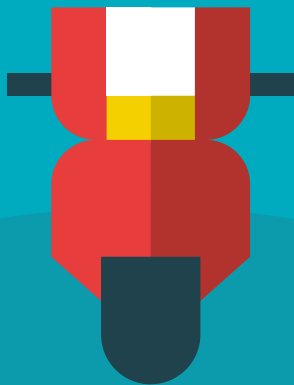


Trips to Summerfield Elementary School- Fall Prevention



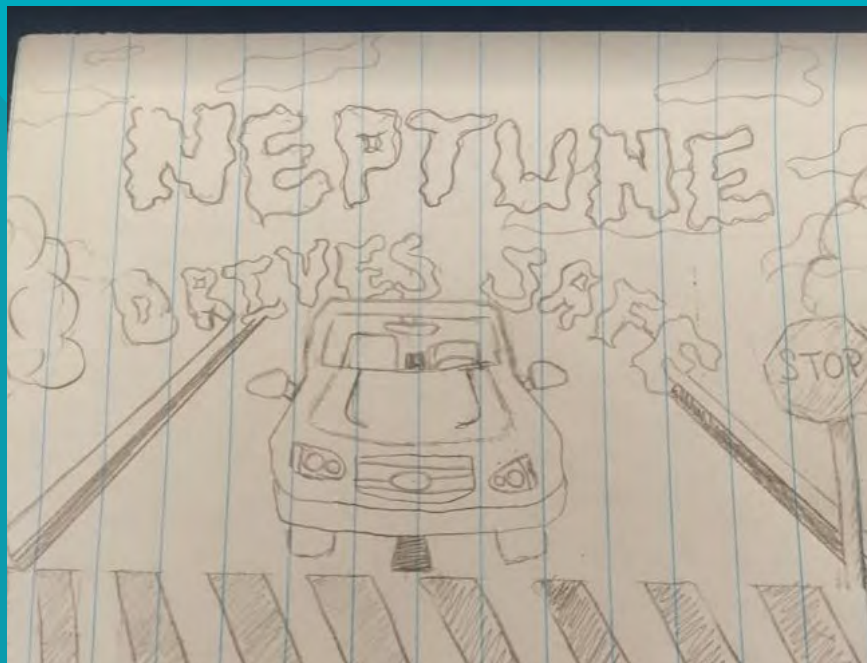
Mural Painting

To ensure sustainability and longevity to our project we elicited the assistance of the art club and painted a Mural focused on safe driving in our community.



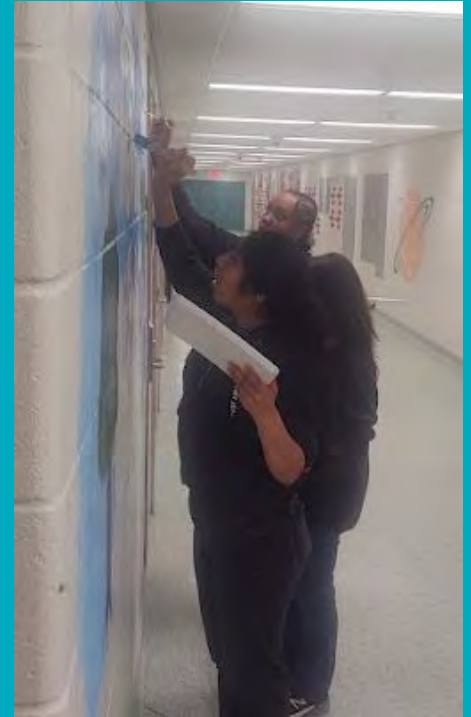
Neptune

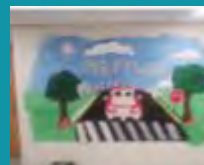
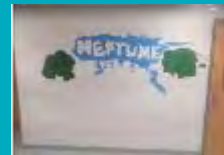
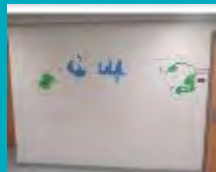
It started with an idea...



Our team also designed a mural idea that would go with our topic. Students would come after school to work on this project. As you can see in the picture, students first sketched the picture on the wall to make sure we have no mistakes. Once that part was done, we started painting until we have our final result.

Mural





Time Lapse of Mural



Neptune Drives Safe Mural



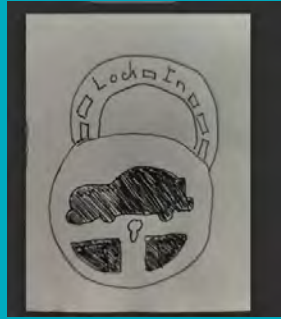
As of the publishing of this report, there are still some finishing touches to implement on the mural. In addition to this painting, we will paint images of cell phones in various locations in the school with messages of safety (i.e. reasons, statistics and laws about distracted driving)

The mural/logo is also featured on our Champion Schools T-Shirts this year

T-Shirt Design



Logos



Slogans

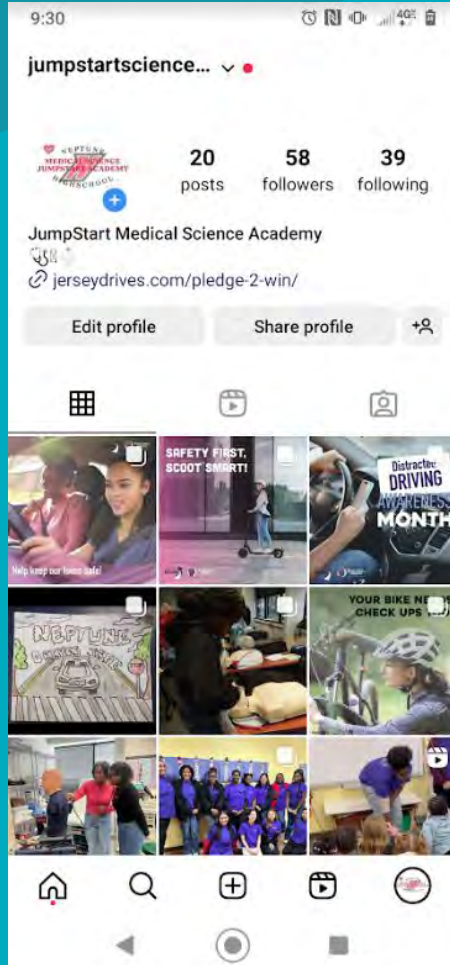
Lock-In Neptune Drives Safe



Post At Noon

Students would do “Post At Noon” pictures on social media every Tuesday to spread the word and promote sharing the road through Pledge 2 Win

We also launched the JumpStart Medical Science Academy Instagram page



- Teens also learned basic life support, CPR, and Stop the Bleed techniques in case they ever need to respond to a trauma.



● Visit to Trauma Unit





Safe Driving Bulletin Board

